



ECONOMIC INDICATORS

NEW SOUTH WALES

EMBARGO: 11:30AM (CANBERRA TIME) FRI 15 SEPT 2000

C O N T E N T S

	<i>Page</i>
Notes	2
NSW overview.	3
Main features	4
List of tables and graphs	5
Financial year data	6
Labour	7
Production	10
Building	11
Retail trade	12
New motor vehicle registrations	13
Tourism	14
Consumer and producer price indexes.	15
Finance	16
State Government finance	17
Investment.	18
International trade.	19

PLEASE NOTE:
Some of the figures
in this publication
will be affected by the GST.
See Data Notes on page 2.

- For further information about these and related statistics, contact Jill Tomlinson on Sydney 02 9268 4123, or the National Information Service on 1300 135 070.

NOTES

FORTHCOMING ISSUES	<table border="0"> <thead> <tr> <th style="text-align: left;"><i>ISSUE</i></th> <th style="text-align: left;"><i>ISSUE DATE</i></th> </tr> </thead> <tbody> <tr> <td>October 2000</td> <td>16 October 2000</td> </tr> <tr> <td>November 2000</td> <td>15 November 2000</td> </tr> <tr> <td>December 2000</td> <td>15 December 2000</td> </tr> <tr> <td>January 2001</td> <td>15 January 2001</td> </tr> <tr> <td>February 2001</td> <td>15 February 2001</td> </tr> <tr> <td>March 2001</td> <td>15 March 2001</td> </tr> </tbody> </table>	<i>ISSUE</i>	<i>ISSUE DATE</i>	October 2000	16 October 2000	November 2000	15 November 2000	December 2000	15 December 2000	January 2001	15 January 2001	February 2001	15 February 2001	March 2001	15 March 2001						
<i>ISSUE</i>	<i>ISSUE DATE</i>																				
October 2000	16 October 2000																				
November 2000	15 November 2000																				
December 2000	15 December 2000																				
January 2001	15 January 2001																				
February 2001	15 February 2001																				
March 2001	15 March 2001																				
CHANGES IN THIS ISSUE	<p>For Table 1, data for the Estimated Resident Population has been replaced for this issue only by data showing the latest financial year information for various sectors of the economy. Also shown with the latest financial year data is the proportion of each sector to the Australian totals for each sector.</p>																				
DATA NOTES	<p>ABS statistical series are being impacted to varying degrees as a result of The New Tax System (TNTS), introduced in Australia from 1 July 2000. TNTS included the removal of Wholesale Sales Tax and the introduction of a Goods and Services Tax (GST), and as a result, a wide range of ABS data series will reflect significant immediate and subsequent impacts. For further information see <i>Australian Economic Indicators, July 2000</i> (Cat. no. 1350.0).</p>																				
GENERAL	<p>This publication provides information on a wide range of economic indicators which are the latest available at the time of publication. In a number of cases, figures appearing in this summary are preliminary and are subject to revision in subsequent issues.</p>																				
SEASONAL ADJUSTMENT AND TREND ESTIMATION	<p>Seasonal adjustment is a means of removing the estimated effects of normal seasonal variation from a series so that the effects of other variations on that series can be more clearly recognised. This means that movements of seasonally adjusted estimates may not be reliable indicators of trend behaviour. Smoothing seasonally adjusted series produces a measure of the underlying trend by reducing the impact of the irregular component of the series. For an explanation of seasonal adjustment derivation, refer to the publication <i>Seasonally Adjusted Indicators</i> (Cat. no. 1308.0).</p>																				
SYMBOLS AND OTHER USAGES	<table border="0"> <tr> <td>kWh</td> <td>kilowatt hour</td> </tr> <tr> <td>teraJ</td> <td>terajoule</td> </tr> <tr> <td>n.a.</td> <td>not available</td> </tr> <tr> <td>n.p.</td> <td>not available for publication but included in totals where applicable</td> </tr> <tr> <td>n.y.a</td> <td>not yet available</td> </tr> <tr> <td>p</td> <td>preliminary</td> </tr> <tr> <td>r</td> <td>figure or series revised since previous issue</td> </tr> <tr> <td>. .</td> <td>not applicable</td> </tr> <tr> <td>—</td> <td>nil or rounded to zero</td> </tr> <tr> <td>—</td> <td>break in continuity of series (where a line is drawn across a column between two consecutive figures)</td> </tr> </table>	kWh	kilowatt hour	teraJ	terajoule	n.a.	not available	n.p.	not available for publication but included in totals where applicable	n.y.a	not yet available	p	preliminary	r	figure or series revised since previous issue	. .	not applicable	—	nil or rounded to zero	—	break in continuity of series (where a line is drawn across a column between two consecutive figures)
kWh	kilowatt hour																				
teraJ	terajoule																				
n.a.	not available																				
n.p.	not available for publication but included in totals where applicable																				
n.y.a	not yet available																				
p	preliminary																				
r	figure or series revised since previous issue																				
. .	not applicable																				
—	nil or rounded to zero																				
—	break in continuity of series (where a line is drawn across a column between two consecutive figures)																				

Gregory W. Bray
Regional Director
New South Wales

NSW OVERVIEW

EMPLOYMENT	Employment in NSW increased by 0.7% in July 2000 to a seasonally adjusted figure of 3,060,200. National employment in July 2000 was 9,117,800.
UNEMPLOYMENT	Unemployment in NSW decreased by 7.7% to a seasonally adjusted figure of 173,400 in July 2000. The unemployment rate decreased to 5.4% in July 2000. The national unemployment rate was 6.3% in July 2000.
AVERAGE WEEKLY EARNINGS	Average weekly earnings (full time adult ordinary time) in May 2000 were \$825.40, an increase of 4.2% compared with May 1999. NSW earnings were 5.4% higher than the national figure.
INDUSTRIAL DISPUTES	In NSW in May 2000 there were 47,100 working days lost due to industrial disputes, an increase of almost 136% on the 20,000 working days lost in the previous month. Nationally there were 66,000 working days lost due to industrial disputes in May 2000.
BUILDING APPROVALS	The seasonally adjusted number of new dwelling units approved for NSW in June 2000 decreased 22% from the previous month to 2,991 dwelling units. The introduction of the GST on 1 July may have affected the reporting of building approvals for the month of June.
RETAIL	In seasonally adjusted terms, total retail sales for NSW in June 2000 was \$4,577 million. For May 2000, the figure was \$4,223 million.
NEW MOTOR VEHICLE REGISTRATIONS	New motor vehicle registrations for NSW in seasonally adjusted terms in June 2000 decreased by 12.3% on the previous month to 17,619 registrations. This may reflect the expectation of reduced costs after the introduction of the GST.
FINANCE	The seasonally adjusted value of housing finance commitments for owner occupation in NSW in June 2000 was \$2,200 million, an decrease of 9.4% on the previous month and an overall decrease of 11.1% on June 1999.
GOVERNMENT FINANCE STATISTICS (GFS)	<p>The General Government GFS result for the 11 months ended 31 May 2000 was an underlying surplus of \$1,465 million. The result comprises a surplus of \$3,498 million on current transactions and a deficit of \$2,033 million on capital transactions.</p> <p>Total receipts amounted to \$24,617 million and total underlying outlays amounted to \$23,152 million.</p> <p>The 1999–2000 Budget projects full year receipts of \$25,987 million and total underlying outlays of \$25,773 million.</p>
IMPORTS AND EXPORTS	The customs value of imports into NSW during June 2000 was \$4,908 million, an increase of 6.5% on May 2000. The value of exports (FOB) from NSW in June 2000 was \$1,745 million, a fall of 1.1% over the same period.

MAIN FEATURES

IMPORTS AND EXPORTS

In June 2000, the customs value of imports into NSW was \$4,908 million and the value of exports (FOB) from NSW was \$1,745 million. In terms of annual movements, imports into NSW increased by 36.6% compared to June 1999, and exports increased by 20.3% over the same period. At the national level, imports at \$10,493 million rose 1.4% on the previous month and were 28.9% up on the figure a year ago. Exports were \$8,615 million, a decrease of 0.8% on the previous period and an increase of 32.6% on the previous year.

Commodities exported from NSW in June 2000 included Meat and meat preparations (\$92 million), Cereal and cereal preparations (\$112 million), Wool and other animal hair (\$64 million), Coal, coke and briquettes (\$267 million), Iron and steel (\$94 million), Aluminium (\$127 million), and Office machines and automatic data processing machines (\$29 million). Significant changes from the previous month occurred for Iron and steel (down 13.2%) and Coke, coal and briquettes (down 9.3%). Changes from June 1999 were significant for Iron and steel (up 58.7%), Wool and other animal hair (up 40.5%) and Aluminium (up 32.9%). Nationally, significant annual movements occurred for Wool and other animal hair (up 62.5%) and Iron and steel (up 46%).

RETAIL

In seasonally adjusted terms, as a result of pre-GST spending, total retail sales for NSW increased 8.4% from \$4,223 million in May 2000 to \$4,577 million in June 2000. Over this period there was significant movement for the Household good retailing (up 26.1% to \$578 million), the Clothing and soft good retailing (up 22.1% to \$374 million) and the Department stores (up 20.9% to \$462 million) industry groups. Comparing June 2000 with June 1999, significant movements occurred for the same industry groups, Household good retailing (up 45.5%), Clothing and soft good retailing (up 20.6%), Department stores (up 32.8%) and also Other retailing (up 18.1% to \$483 million).

Nationally, seasonally adjusted total retail sales in June 2000 was \$13,166 million, up 7.7% from the previous month's figure of \$12,229 million. As with NSW, between May 2000 and June 2000 there were significant movements for the Household good retailing (up 23.6% to \$1,790 million), Clothing and soft good retailing (up 20.5% to \$999 million) and Department stores (up 17.2% to \$1,279 million) industry groups. Compared to June 1999, significant movement was shown by the same industry groups which increased by 33.5%, 20% and 28% respectively.

LIST OF TABLES AND GRAPHS

page

FINANCIAL YEAR DATA	1 Financial year data, various sectors, NSW and Australia	6
LABOUR	2 Labour data, latest time period, NSW and Australia	7
	3 Labour data, time series, NSW	7
	4 Labour force status of the civilian population, NSW	8
	5 Graph: Unemployment rates, NSW and Australia	9
	6 Coal, electricity and gas production, latest time period, NSW and Australia	10
PRODUCTION	7 Coal, electricity and gas production, time series, NSW	10
BUILDING	8 Building approvals, latest time period, NSW and Australia	11
	9 Building approvals, time series, NSW	11
RETAIL TRADE	10 Turnover of retail establishments, latest time period, NSW and Australia	12
	11 Turnover of retail establishments, seasonally adjusted, time series, NSW	12
NEW MOTOR VEHICLE REGISTRATIONS	12 New motor vehicle registrations, latest time period, NSW and Australia	13
	13 New motor vehicle registrations, seasonally adjusted, time series, NSW	13
	14 Accommodation Establishments, latest time period, NSW and Australia	14
TOURISM	15 Accommodation Establishments, time series, Sydney and NSW	14
	16 Graph: Hotels, motels etc., monthly room occupancy rates, Sydney Tourism Region and NSW	14
	17 Consumer and producer price indexes, latest time period, NSW and Australia	15
CONSUMER AND PRODUCER PRICE INDEXES	18 Consumer and producer price indexes, time series, NSW	15
	19 Graph: Consumer Price Index, Sydney and average of 8 capital cities	15
	20 Finance commitments, latest time period, NSW and Australia	16
FINANCE	21 Finance commitments, time series, NSW	16
STATE GOVERNMENT FINANCE	22 Government finance, budget sector, time series, NSW	17
INVESTMENT	23 Actual private new fixed capital expenditure, latest time period, NSW and Australia	18
	24 Actual private new fixed capital expenditure, time series, NSW	18
	25 Graph: Actual private new fixed capital expenditure by type of asset, trend estimate, NSW	18
INTERNATIONAL TRADE	26 Imports and exports, latest time period, NSW and Australia	19
	27 Imports and exports, time series, NSW	19

1 FINANCIAL YEAR DATA, VARIOUS SECTORS—NSW AND AUSTRALIA

	<i>Unit</i>	<i>Period</i>	<i>Latest figure for New South Wales</i>	<i>Proportion of Australian total %</i>
Population				
Estimated resident population (at end December)	'000	1999	6 453	33.8
National accounts				
Gross State Product	\$m	1998–99	212 635	35.8
State final demand	\$m	1998–99	207 688	34.5
Overseas trade				
Overseas imports into NSW	\$m	1999–00	47 969	43.5
Total overseas exports	\$m	1999–00	18 934	20.7
Production				
Value of agricultural commodities produced	\$m	1998–99	p 8 001	27.6
Mining operations—turnover	\$m	1998–99	p 6 230	16.5
Manufacturing Industry—turnover	\$m	1998–99	p 71 189	32.3
Tourist accommodation—takings	\$m	1998–99	1 395	35.0
Building approvals	\$m	1999–00	12 034	33.0
Building commencements	\$m	1998–99	12 093	37.1
Engineering construction—value of work done	\$m	1998–99	5 597	29.7
Consumption and investment				
New motor vehicle registrations	no.	1999–00	258 515	35.5
Private new capital expenditure	\$m	1998–99	14 393	32.3
Retail turnover	\$m	1999–00	50 737	34.4
Finance				
Housing finance commitments	\$m	1999–00	31 007	41.4
Selected service industries				
Income from market research industry	\$m	1998–99	241	52.9
Income from security services industry	\$m	1998–99	560	40.1
Income from real estate industry	\$m	1998–99	1 337	34.3
Information technology				
Computing services industry	\$m	1998–99	5 172	49.4
Research and development				
Research and development expenditure (all sectors)	\$m	1998–99	2 662	30.1

2 LABOUR—NSW AND AUSTRALIA

	New South Wales					Australia			
	Unit	Latest period	Latest figure	Change from prior period	Change from same period prior year	Latest figure	Change from prior period	Change from same period prior year	
				%	%		%	%	
Employed persons (seasonally adjusted)	'000	July 2000	3 060.2	0.7	4.2	9 117.8	0.8	3.7	
Unemployed persons (seasonally adjusted)	'000	July 2000	173.4	-7.7	-9.7	609.7	-5.2	-7.5	
Labour force (seasonally adjusted)	'000	July 2000	3 233.6	0.2	3.3	9 727.5	0.4	3.0	
Participation rate (seasonally adjusted)	%	July 2000	62.7	0.0	1.8	63.9	0.3	1.4	
Unemployment rate (seasonally adjusted)	%	July 2000	5.4	-6.9	-11.5	6.3	-4.5	-10.0	
Industrial disputes—working days lost	'000	May 2000	47.1	135.5	1 419.4	66.0	56.4	286.0	
Job vacancies	'000	May 2000	41.8	-9.8	11.7	106.8	-5.2	20.2	
Average weekly employee earnings—full-time adult ordinary time earnings (seasonally adjusted)	\$	May 2000	825.4	1.7	4.2	783.4	1.2	4.3	

Source: Average Weekly Earnings, States and Australia (Cat. no. 6302.0); Industrial Disputes, Australia (Cat. no. 6321.0); Job Vacancies, Australia (Cat. no. 6354.0); Labour Force, Australia, Preliminary (Cat. no. 6202.0).

3 LABOUR—NSW

	Seasonally adjusted						
	Employed persons	Unemployed persons	Labour force	Participation rate	Unemployment rate	Industrial disputes (working days lost)	Job vacancies
	'000	'000	'000	%	%	'000	'000
1999							
May	2 920.5	203.8	3 124.3	61.7	6.5	3.1	37.5
June	2 926.9	201.6	3 128.5	61.7	6.4	3.9	..
July	2 938.2	192.1	3 130.3	61.6	6.1	23.4	..
August	2 936.1	208.2	3 144.3	61.8	6.6	32.2	48.3
September	2 948.9	217.8	3 166.7	62.2	6.9	33.8	..
October	2 967.0	190.0	3 157.0	61.9	6.0	16.7	..
November	2 960.5	176.9	3 137.4	61.5	5.6	121.4	36.9
December	2 971.5	199.9	3 171.4	62.0	6.3	29.1	..
2000							
January	2 974.0	189.5	3 163.5	61.8	6.0	7.5	..
February	3 004.5	186.4	3 190.9	62.3	5.8	20.1	46.4
March	3 013.9	193.3	3 207.2	62.5	6.0	11.7	..
April	3 038.2	181.8	3 220.0	62.7	5.6	20.0	..
May	3 053.4	185.1	3 238.5	63.0	5.7	47.1	41.8
June	3 038.4	187.9	3 226.3	62.7	5.8	n.y.a.	..
July	3 060.2	173.4	3 233.6	62.7	5.4	n.y.a.	..

Source: Industrial Disputes, Australia (Cat. no. 6321.0); Job Vacancies, Australia (Cat. no. 6354.0); Labour Force, Australia, Preliminary (Cat. no. 6202.0).

4 LABOUR FORCE STATUS, NSW—ORIGINAL

	<i>Employed</i>		<i>Unemployed</i>		<i>Labour force</i>	<i>Not in labour force</i>	<i>Civilian population aged 15 years and over</i>	<i>Unemployment rate(a)</i>	<i>Participation rate(b)</i>
	<i>Full-time workers</i>	<i>Total</i>	<i>Looking for full-time work</i>						
	'000	'000	'000	'000					
MALES									
June									
1996	1 420.9	1 594.3	115.1	131.9	1 726.2	667.1	2 393.3	7.6	72.1
1997	1 422.0	1 600.1	128.5	143.6	1 743.8	681.9	2 425.7	8.2	71.9
1998	1 465.0	1 641.6	114.2	126.6	1 768.2	691.5	2 459.7	7.2	71.9
1999									
May	1 460.0	1 662.7	93.3	110.1	1 772.8	717.2	2 490.0	6.2	71.2
June	1 459.4	1 668.1	91.6	108.0	1 776.1	717.3	2 493.4	6.1	71.2
July	1 491.8	1 687.4	83.2	101.3	1 788.7	707.7	2 496.4	5.7	71.7
August	1 464.1	1 662.6	95.9	115.3	1 777.8	721.6	2 499.4	6.5	71.1
September	1 502.7	1 696.2	97.6	124.8	1 820.9	681.5	2 502.4	6.9	72.8
October	1 504.7	1 688.4	87.4	105.5	1 793.9	712.6	2 506.4	5.9	71.6
November	1 498.9	1 681.8	81.4	95.1	1 777.0	733.5	2 510.5	5.4	70.8
December	1 530.2	1 711.0	95.2	116.1	1 827.0	687.5	2 514.5	6.4	72.7
2000									
January	1 497.6	1 680.2	104.8	119.9	1 800.1	717.6	2 517.7	6.7	71.5
February	1 503.6	1 694.0	95.8	113.8	1 807.8	713.1	2 520.9	6.3	71.7
March	1 494.2	1 701.8	93.5	114.1	1 815.9	708.2	2 524.0	6.3	71.9
April	1 504.7	1 716.6	81.8	100.5	1 817.1	710.5	2 527.6	5.5	71.9
May	1 504.2	1 719.5	79.7	98.2	1 817.7	713.5	2 531.1	5.4	71.8
June	1 517.3	1 718.7	86.3	100.5	1 819.2	715.5	2 534.7	5.5	71.8
July	1 528.2	1 732.5	81.4	99.6	1 832.1	705.5	2 537.6	5.4	72.2
FEMALES									
June									
1996	733.6	1 207.9	62.1	90.3	1 298.2	1 186.2	2 484.4	7.0	52.3
1997	731.3	1 214.8	61.0	92.0	1 306.7	1 210.2	2 516.9	7.0	51.9
1998	765.8	1 259.0	59.7	88.2	1 347.2	1 201.3	2 548.5	6.5	52.9
1999									
May	729.5	1 250.2	56.8	90.0	1 340.3	1 235.9	2 576.1	6.7	52.0
June	746.9	1 264.6	52.3	81.5	1 346.2	1 232.9	2 579.1	6.1	52.2
July	754.9	1 265.7	53.2	76.5	1 342.2	1 239.8	2 582.0	5.7	52.0
August	723.4	1 237.1	54.9	86.7	1 323.8	1 261.2	2 584.9	6.5	51.2
September	749.9	1 285.6	61.3	97.6	1 383.2	1 204.7	2 587.9	7.1	53.4
October	767.2	1 289.1	51.3	77.1	1 366.2	1 225.1	2 591.3	5.6	52.7
November	756.5	1 283.3	50.5	71.8	1 355.1	1 239.7	2 594.8	5.3	52.2
December	788.4	1 307.0	54.7	80.9	1 387.9	1 210.4	2 598.3	5.8	53.4
2000									
January	776.9	1 257.2	55.3	80.7	1 337.9	1 262.8	2 600.7	6.0	51.4
February	755.7	1 282.3	57.0	98.2	1 380.5	1 222.7	2 603.2	7.1	53.0
March	771.1	1 307.8	57.0	92.4	1 400.2	1 205.4	2 605.6	6.6	53.7
April	791.3	1 318.7	52.1	82.4	1 401.1	1 207.3	2 608.4	5.9	53.7
May	784.9	1 324.9	53.2	83.7	1 408.7	1 202.5	2 611.2	5.9	53.9
June	783.4	1 326.0	39.8	76.1	1 402.2	1 211.8	2 614.0	5.4	53.6
July	812.3	1 344.0	36.0	60.9	1 404.8	1 211.8	2 616.7	4.3	53.7

(a) For footnotes see end of table.

4 LABOUR FORCE STATUS, NSW—ORIGINAL—continued

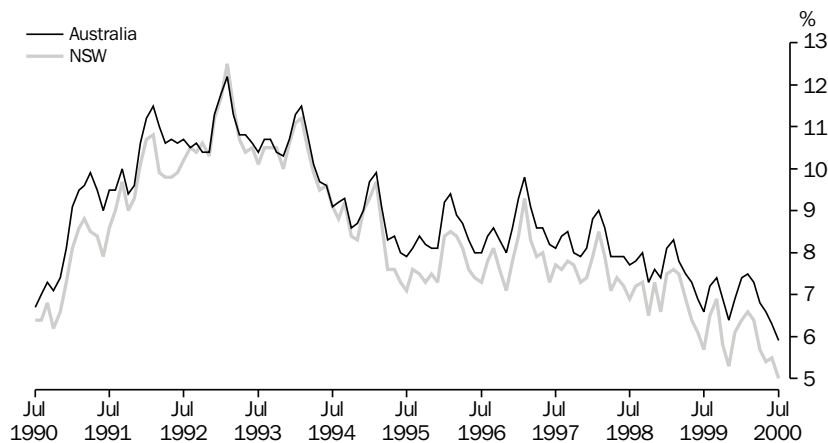
	<u>Employed</u>		<u>Unemployed</u>		<u>Labour force</u>	<u>Not in labour force</u>	<u>Civilian population aged 15 years and over</u>	<u>Unemployment rate(a)</u>	<u>Participation rate(b)</u>
	<u>Full-time workers</u>	<u>Total</u>	<u>Looking for full-time work</u>	<u>Total</u>					
	'000	'000	'000	'000					
PERSONS									
June									
1996	2 154.6	2 802.2	177.2	222.2	3 024.5	1 853.2	4 877.7	7.3	62.0
1997	2 153.3	2 814.9	189.6	235.6	3 050.5	1 892.1	4 942.6	7.7	61.7
1998	2 230.8	2 900.5	173.8	214.8	3 115.3	1 892.8	5 008.2	6.9	62.2
1999									
May	2 189.6	2 912.9	150.2	200.1	3 113.1	1 953.1	5 066.1	6.4	61.4
June	2 206.3	2 932.7	143.9	189.6	3 122.3	1 950.3	5 072.5	6.1	61.6
July	2 246.7	2 953.2	136.4	177.8	3 131.0	1 947.5	5 078.5	5.7	61.7
August	2 187.6	2 899.6	150.8	202.0	3 101.6	1 982.8	5 084.4	6.5	61.0
September	2 252.6	2 981.8	158.9	222.4	3 204.2	1 886.2	5 090.3	6.9	62.9
October	2 271.8	2 977.5	138.6	182.6	3 160.1	1 937.7	5 097.8	5.8	62.0
November	2 255.4	2 965.1	131.9	167.0	3 132.1	1 973.2	5 105.3	5.3	61.3
December	2 318.6	3 017.9	149.9	197.0	3 214.9	1 897.9	5 112.8	6.1	62.9
2000									
January	2 274.5	2 937.4	160.1	200.6	3 138.0	1 980.4	5 118.4	6.4	61.3
February	2 259.3	2 976.3	152.8	212.0	3 188.3	1 935.7	5 124.0	6.6	62.2
March	2 265.4	3 009.6	150.4	206.5	3 216.1	1 913.6	5 129.7	6.4	62.7
April	2 296.0	3 035.3	133.9	182.9	3 218.2	1 917.8	5 136.0	5.7	62.7
May	2 289.1	3 044.4	132.8	181.9	3 226.3	1 916.0	5 142.3	5.6	62.7
June	2 300.6	3 044.7	126.0	176.6	3 221.3	1 927.3	5 148.6	5.5	62.6
July	2 340.5	3 076.5	117.4	160.5	3 237.0	1 917.3	5 154.3	5.0	62.8

(a) The number of unemployed in each group expressed as a percentage of the labour force in the same group.

(b) The labour force in each group expressed as a percentage of the civilian population aged 15 years and over in the same group.

Source: Labour Force, Australia, Preliminary (Cat. no. 6202.0).

5 UNEMPLOYMENT RATE—ORIGINAL



Source: Labour Force, Australia, Preliminary (Cat. no. 6202.0).

6 COAL, ELECTRICITY AND GAS PRODUCTION, NSW AND AUSTRALIA—ORIGINAL

	Unit	Latest period	New South Wales			Australia		
			Latest figure	Change from prior period	Change from same period prior year	Latest figure	Change from prior period	Change from same period prior year
				%	%		%	%
Raw coal won								
Underground	'000 tonnes	May 2000	5 590	47.4	19.9	9 160	17.4	15.8
Open cut	'000 tonnes	May 2000	8 661	67.1	37.4	18 793	36.5	6.5
Total	'000 tonnes	May 2000	14 251	58.8	29.9	27 953	29.6	9.4
Electricity	mill. kWh	Mar qtr 2000	16 339	6.9	4.7	46 040	3.2	2.1
Gas(a)	teraJ	Mar qtr 2000	n.p.	n.p.	n.p.	152 773	-3.6	5.4

(a) Available for issue through mains. Includes ACT.

Source: Joint Coal Board for NSW and Australia from ABS unpublished statistics, Manufacturing Production, Australia (Cat. no. 8301.0).

7 COAL, ELECTRICITY AND GAS PRODUCTION, NSW—ORIGINAL

	Raw coal won			Electricity	Gas(a)
	Underground	Open cut	Total		
	'000 tonnes	'000 tonnes	'000 tonnes		
1996-97	54 642	69 036	123 678	62 788	109 284
1997-98	58 299	75 710	134 009	61 804	111 665
1998-99	51 158	80 209	131 367	63 743	110 092
1999					
January	3 273	6 159	9 432	15 609	22 367
February	3 848	6 913	10 761		
March	4 921	7 827	12 748		
April	3 525	5 768	9 293	16 365	30 428
May	4 664	6 303	10 967		
June	5 209	7 448	12 657		
July	4 137	6 270	10 407	16 977	32 555
August	3 820	6 306	10 126		
September	5 552	8 215	13 767		
October	4 045	6 084	10 129	15 284	26 029
November	4 340	6 213	10 553		
December	4 662	7 066	11 728		
2000					
January	3 562	5 688	9 250	16 339	n.p.
February	3 878	6 362	10 240		
March	4 951	6 688	11 639		
April	3 792	5 051	8 843	n.a.	n.a.
May	5 590	8 661	14 251	n.a.	n.a.

(a) Available for issue through mains. Includes ACT.

Source: Joint Coal Board, Manufacturing Production, Australia (Cat. no. 8301.0).

8 BUILDING APPROVALS—NSW AND AUSTRALIA

	Unit	Latest period	Latest figure	New South Wales		Australia		
				Change from prior period %	Change from same period prior year %	Latest figure	Change from prior period %	Change from same period prior year %
Number of dwelling units(a) (seasonally adjusted(b))								
New houses	no.	June 2000	1 831	-9.8	-27.7	7 136	-15.2	-25.6
Total	no.	June 2000	2 991	-22.0	-31.7	10 616	-18.0	-24.3
Value of new residential building (seasonally adjusted)	\$m	June 2000	393.4	-24.0	-32.9	1 302.7	-19.9	-21.4
Value of alterations and additions to residential building(c) (seasonally adjusted)	\$m	June 2000	77.0	-36.4	-16.0	255.9	-19.5	1.2
Value of non-residential building(d) (original)	\$m	June 2000	344.3	14.5	-31.6	990.5	-7.2	0.3
Value of all building (original)	\$m	June 2000	797.0	-25.2	-32.1	2 569.9	-22.1	-11.8

(a) Includes dwelling units approved as part of the construction of non-residential building and alterations and additions to existing buildings (including conversions to dwelling units).

(b) Seasonally adjusted and trend estimates to April 2000 have been revised. See Building Approvals, Australia (Cat. no. 8731.0).

(c) Valued at \$10,000 or more. Includes conversions of existing buildings into residential buildings.

(d) Valued at \$50,000 or more.

Source: Building Approvals, Australia (Cat. no. 8731.0).

9 BUILDING APPROVALS—NSW

	Number of dwelling units(a), seasonally adjusted(b)				Value of building approvals			
	New houses		Total		Seasonally adjusted		Original	
	Private sector	Total	Private sector	Total	Alterations and additions to residential building(c)	Non-residential building(d)	All building	
	no.	no.	no.	no.	\$m	\$m	\$m	\$m
1996-97	5 169.2	11 356.6
1997-98	5 910.9	13 348.6
1998-99	4 543.4	11 932.3
1999								
April	2 257	2 267	4 433	4 498	530.6	96.1	207.5	784.7
May	2 566	2 592	4 494	4 604	540.5	107.3	424.7	1 147.3
June	2 518	2 533	4 244	4 382	585.9	91.7	503.7	1 173.7
July	2 692	2 705	r 4 208	r 4 365	601.9	109.0	523.6	1 268.5
August	r 2 611	2 614	r 4 609	r 4 663	r 627.2	r 114.8	509.0	r 1 282.8
September	r 2 321	r 2 355	r 4 422	r 4 467	r 538.8	r 111.8	r 260.5	r 935.5
October	r 2 712	r 2 737	r 4 468	r 4 609	r 569.3	r 116.0	266.0	r 897.3
November	r 2 755	r 2 774	r 4 119	r 4 192	r 514.0	r 104.4	264.1	r 978.8
December	r 2 958	r 2 975	r 4 387	r 4 433	r 562.6	r 113.9	278.1	r 948.5
2000								
January	r 2 675	r 2 689	r 4 142	r 4 235	r 606.4	r 91.9	359.2	r 935.6
February	r 2 802	r 2 818	r 4 171	r 4 285	r 556.4	r 122.0	279.5	936.4
March	r 2 592	r 2 602	r 4 148	4 177	r 519.3	r 121.6	r 444.5	r 1 083.5
April	r 2 185	r 2 205	3 561	3 701	r 479.5	r 118.6	r 382.0	r 905.1
May	r 2 012	r 2 030	r 3 751	r 3 836	r 517.7	r 121.0	r 300.8	r 1 065.2
June	1 824	1 831	2 868	2 991	393.4	77.0	344.3	797.0

(a) Includes dwelling units approved as part of the construction of non-residential building and alterations and additions to existing buildings (including conversions to dwelling units).

(b) Seasonally adjusted and trend estimates to April 2000 have been revised. See Building Approvals, Australia (Cat. no. 8731.0).

(c) Valued at \$10,000 or more. Includes conversions of existing buildings into residential buildings.

(d) Valued at \$50,000 or more.

Source: Building Approvals, Australia (Cat. no. 8731.0).

10 TURNOVER OF RETAIL ESTABLISHMENTS(a), NSW AND AUSTRALIA—SEASONALLY ADJUSTED

	Latest period	New South Wales			Australia		
		Latest figure	Change from prior period	Change from same period prior year	Latest figure	Change from prior period	Change from same period prior year
Food retailing	Jun 2000	1 588.0	2.6	1.4	4 968.3	1.9	2.7
Department stores	Jun 2000	462.2	20.9	32.8	1 279.2	17.2	28.0
Clothing and soft good retailing	Jun 2000	374.1	22.1	20.6	999.3	20.5	20.0
Household good retailing	Jun 2000	577.6	26.1	45.5	1 790.2	23.6	33.5
Recreational good retailing	Jun 2000	203.8	-3.3	6.6	610.1	0.6	1.4
Other retailing	Jun 2000	482.5	8.8	18.1	1 402.4	6.5	11.1
Hospitality and services	Jun 2000	888.8	1.7	0.8	2 116.9	2.6	3.9
Total value of retail sales	Jun 2000	4 577.0	8.4	11.6	13 166.3	7.7	10.5

(a) The figures shown are derived from a monthly survey of retail establishments. Excludes motor vehicle, boat and caravan dealers, service stations, smash repairers, tyre and battery retailers, bread and milk vendors, footwear repairers and electrical appliance repairers n.e.c. Retail establishments which do not have employees are excluded from the survey. Turnover includes retail sales, wholesale sales, takings from repairs, meals and hiring of goods; and commissions from agency activity (e.g. commissions received from collecting dry cleaning, selling lottery tickets etc.).

Source: Retail Trade, Australia (Cat. no. 8501.0).

11 TURNOVER OF RETAIL ESTABLISHMENTS(a), NSW—SEASONALLY ADJUSTED

	Food retailing	Department stores	Clothing and soft good retailing	Household good retailing	Recreational good retailing	Other retailing	Hospitality and services	Total
	\$m	\$m	\$m	\$m	\$m	\$m	\$m	\$m
1999								
April	1 540.9	358.4	324.5	389.8	194.9	416.9	889.8	4 115.1
May	1 543.8	355.2	301.6	391.8	180.9	426.6	898.0	4 097.8
June	1 565.5	348.1	310.2	396.9	191.1	408.4	882.0	4 102.2
July	1 555.1	359.3	305.4	403.8	199.6	412.8	856.4	4 092.4
August	1 592.5	372.7	321.9	430.1	195.0	426.5	843.1	4 181.7
September	1 593.5	362.9	319.5	448.7	193.4	427.6	870.0	4 215.6
October	1 586.9	379.0	323.2	458.8	189.6	424.8	851.1	4 213.4
November	1 589.5	373.7	326.9	440.8	185.7	435.4	845.7	4 197.7
December	1 605.5	371.8	322.4	420.7	184.5	441.4	855.8	4 202.1
2000								
January	1 542.4	373.7	314.9	440.6	196.7	422.6	854.9	4 145.7
February	1 547.9	378.7	292.0	457.3	195.8	430.3	861.0	4 163.0
March	1 545.7	370.6	321.8	450.3	198.1	425.6	866.4	4 178.4
April	1 560.6	378.2	302.2	445.7	204.8	430.2	870.7	4 192.2
May	1 548.4	382.3	306.3	458.2	210.7	443.6	873.6	4 223.2
June	1 588.0	462.2	374.1	577.6	203.8	482.5	888.8	4 577.0

(a) The figures shown are derived from a monthly survey of retail establishments. Excludes motor vehicle, boat and caravan dealers, service stations, smash repairers, tyre and battery retailers, bread and milk vendors, footwear repairers and electrical appliance repairers n.e.c. Retail establishments which do not have employees are excluded from the survey. Turnover includes retail sales, wholesale sales, takings from repairs, meals and hiring of goods; and commissions from agency activity (e.g. commissions received from collecting dry cleaning, selling lottery tickets etc.).

(b) Data for previous months have been revised due to concurrent seasonal adjustment methodology. See Explanatory Notes in Retail Trade, Australia (Cat. no. 8501.0).

Source: Retail Trade, Australia (Cat. no. 8501.0).

12 NEW MOTOR VEHICLE REGISTRATIONS(a), NSW AND AUSTRALIA—SEASONALLY ADJUSTED

	Latest period	New South Wales			Australia		
		Latest figure	Change from prior period	Change from same period prior year	Latest figure	Change from prior period	Change from same period prior year
		no.	%	%	no.	%	%
Passenger vehicles	June 2000	13 911	-15.4	-28.4	38 698	-19.5	-29.1
Other vehicles (excluding motor cycles)	June 2000	3 708	1.3	10.3	11 344	3.8	8.8
Total registrations (excluding motor cycles)	June 2000	17 619	-12.3	-22.7	50 042	-15.2	-23.0

(a) Includes vehicles (other than those of the defence forces) owned by Government departments and authorities. Excludes mobile plant and equipment, tractors, trailers and non-motorised caravans.

Source: *New Motor Vehicle Registrations, Australia, Preliminary (Cat. no. 9301.0)*.

13 NEW MOTOR VEHICLE REGISTRATIONS(a), NSW—SEASONALLY ADJUSTED

	Passenger vehicles	Other vehicles (excluding motor cycles)	Total (excluding motor cycles)
	no.	no.	no.
1999			
April	19 504	3 372	22 876
May	18 845	3 184	22 029
June	19 442	3 363	22 805
July	19 633	3 748	23 381
August	17 713	3 449	21 162
September	18 022	3 553	21 574
October	17 819	3 802	21 621
November	18 426	3 942	22 368
December	19 679	4 395	24 074
2000			
January	17 675	3 672	21 347
February	18 376	3 977	22 352
March	18 314	3 530	21 844
April	17 517	3 451	20 968
May	16 439	3 661	20 100
June	13 911	3 708	17 619

(a) Includes vehicles (other than those of the defence forces) owned by Government departments and authorities. Excludes mobile plant and equipment, tractors, trailers and non-motorised caravans.

Source: *New Motor Vehicle Registrations, Australia, Preliminary (Cat. no. 9301.0)*.

14 ACCOMMODATION ESTABLISHMENTS(a) NSW AND AUSTRALIA—ORIGINAL

	Unit	Latest period	New South Wales			Australia		
			Latest figure	Change from prior period %	Change from same period prior year %	Latest figure	Change from prior period %	Change from same period prior year %
Room nights	'000	Mar qtr 2000	3 388.1	-1.0	5.4	10 088.1	-3.1	5.2
Room occupancy rate	%	Mar qtr 2000	60.3	-1.0	-0.5	58.2	-2.5	0.2
Takings	\$'000	Mar qtr 2000	397 869	-0.7	10.3	1 088 603	-2.1	8.5

(a) Licensed hotels with facilities, motels and guest houses and serviced apartments with 15 or more rooms or units.

Source: *Tourist Accommodation, Australia (Cat. no. 8635.0)*.

15 ACCOMMODATION ESTABLISHMENTS(a) SYDNEY AND NSW—ORIGINAL

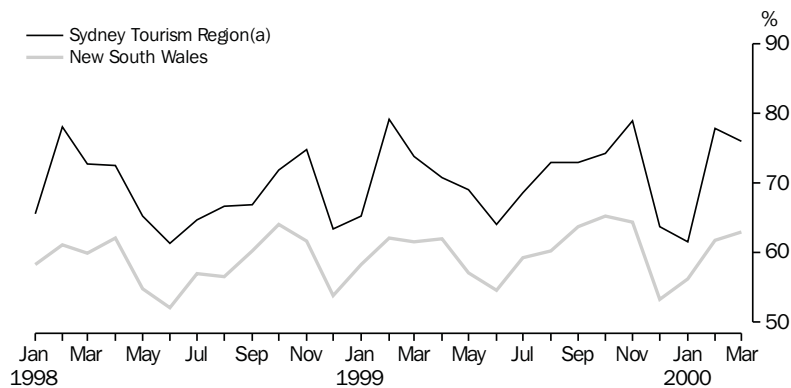
	Sydney Tourism Region(b)			New South Wales		
	Room nights	Room occupancy rate	Takings	Room nights	Room occupancy rate	Takings
	'000	%	\$'000	'000	%	\$'000
1998						
December qtr	1 777.0	70.0	246 125	3 210.5	59.8	359 172
1999						
March qtr	1 828.8	72.5	248 997	3 213.2	60.6	360 674
June qtr	1 731.3	68.0	226 273	3 099.9	57.9	332 669
September qtr	1 865.9	71.6	247 543	3 345.0	61.1	375 014
December qtr	1 962.5	72.3	276 165	3 423.1	60.9	395 165
2000						
March qtr 2000	1 980.0	71.7	279 374	3 388.1	60.3	397 869

(a) Licensed hotels with facilities, motels and guest houses and serviced apartments with 15 or more rooms or units.

(b) Excludes Gosford, Wyong and Blue Mountains Statistical Local Areas.

Source: *Tourist Accommodation, Small Area Data, New South Wales (Cat. no. 8635.1.40.001)*.

16 ACCOMMODATION ESTABLISHMENTS, MONTHLY ROOM OCCUPANCY RATE—ORIGINAL



(a) Excludes Gosford, Wyong and Blue Mountains Statistical Local Areas.

Source: *Tourist Accommodation, Small Area Data, NSW (Prod. no. 8635.1.40.001)*.

17 CONSUMER AND PRODUCER PRICE INDEXES—NSW AND AUSTRALIA

	Unit	Latest period	Latest figure	New South Wales(a)		Australia(b)		
				Change from prior period	Change from same period prior year	Change from prior period	Change from same period prior year	
				%	%	Latest figure	%	%
Consumer Price Index (all groups)	1989–90 =100.0	June qtr 2000	127.0	1.0	3.3	126.2	0.8	3.2
Price index of materials used in house building (all groups)	1989–90 =100.0	June qtr 2000	131.2	2.5	7.7	125.5	1.4	5.3
Price index of materials used in building other than house building (all groups)	1989–90 =100.0	June qtr 2000	117.3	0.8	1.6	117.4	0.9	1.7

(a) Refers to State capital city—Sydney.

(b) For the Consumer Price Index this is the weighted average of eight capital cities and for the other two indexes, the weighted average of the six State capital cities.

Source: Consumer Price Index, Australia (Cat. no. 6401.0); Price Index of Materials Used in Building Other Than House Building, Six State Capital Cities (Cat. no. 6407.0); Price Index of Materials Used in House Building, Six State Capital Cities (Cat. no. 6408.0).

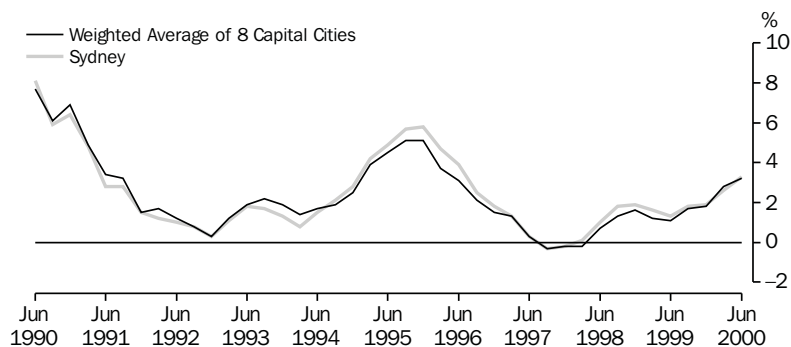
18 CONSUMER AND PRODUCER PRICE INDEXES—NSW(a)

	Consumer Price Index, all groups	Price Index of materials used in house building, all groups	Price Index of materials used in building other than house building, all groups
	1989–90 = 100.0	1989–90 = 100.0	1989–90 = 100.0
1999			
March qtr	122.6	122.0	115.2
June qtr	123.0	121.8	115.4
September qtr	124.1	123.7	115.1
December qtr	124.7	124.4	115.3
2000			
March qtr	125.8	128.0	116.4
June qtr	127.0	131.2	117.3

(a) Refers to State capital city—Sydney.

Source: Consumer Price Index, Australia (Cat. no. 6401.0); Price Index of Materials Used in Building Other Than House Building, Six State Capital Cities (Cat. no. 6407.0); Price Index of Materials Used in House Building, Six State Capital Cities (Cat. no. 6408.0).

19 CONSUMER PRICE INDEX, ANNUAL RATE OF CHANGE



Source: Consumer Price Index, Australia (Cat. no. 6401.0).

20 SECURED HOUSING FINANCE COMMITMENTS TO INDIVIDUALS FOR OWNER OCCUPATION—NSW AND AUSTRALIA

	Latest period	New South Wales			Australia		
		Latest figure	Change from prior period	Change from same period prior year	Latest figure	Change from prior period	Change from same period prior year
Lending commitments for the construction or purchase of dwellings							
Construction of dwellings	June 2000	199	-19.1	-33.7	610	-23.2	-35.7
Purchase of newly erected dwellings	June 2000	86	-8.1	-26.0	248	6.5	-4.0
Purchase of established dwellings(a)	June 2000	1 621	-15.1	-12.4	3 563	-18.0	-12.9
Refinancing of existing dwellings	June 2000	460	-12.2	10.1	1 159	-8.9	18.0
Lending commitments for alterations and additions	June 2000	105	-12.3	-0.1	264	-15.3	-5.9
Total lending commitments to individuals for housing(b)	June 2000	2 366	-14.6	-11.9	5 581	-16.0	-11.2
Total lending commitments to individuals for housing (seasonally adjusted)(b)	June 2000	2 200	-9.4	-11.1	5 171	-14.4	-12.4

(a) Excludes refinancing.

(b) Excludes alterations and additions.

Source: *Housing Finance for Owner Occupation, Australia (Cat. no. 5609.0)*.

21 SECURED HOUSING FINANCE COMMITMENTS TO INDIVIDUALS FOR OWNER OCCUPATION—NSW

	Lending commitments for the construction or purchase of dwellings					Total lending commitments to individuals for housing(b)	
	Construction of dwellings	Purchase of newly erected dwellings	Purchase of established dwellings(a)	Refinancing of existing dwellings	Lending commitments for alterations and additions	Original	Seasonally adjusted
1997-98	2 625	1 280	14 445	3 573	1 174	21 923	..
1998-99	2 990	1 147	16 761	4 026	1 126	24 925	..
1999-2000	3 270	1 129	21 629	4 980	1 271	31 007	..
1999							
April	242	79	1 600	333	97	2 255	2 271
May	276	96	1 787	364	110	2 524	2 387
June	300	116	1 851	418	105	2 686	2 476
July	271	96	1 786	335	93	2 489	2 410
August	286	90	1 800	396	96	2 572	2 525
September	315	101	1 841	394	106	2 652	2 524
October	290	104	1 956	418	110	2 768	2 993
November	329	115	2 122	460	120	3 026	2 889
December	275	90	1 893	415	105	2 672	2 792
2000							
January	226	70	1 404	309	83	2 010	2 712
February	324	103	1 759	423	114	2 609	2 709
March	296	101	1 956	488	123	2 842	2 428
April	213	78	1 581	358	94	2 229	2 407
May	r 246	r 94	r 1 909	r 524	r 119	r 2 772	r 2 428
June	199	86	1 621	460	105	2 366	2 200

(a) Excludes refinancing.

(b) Excludes alterations and additions.

Source: *Housing Finance for Owner Occupation, Australia (Cat. no. 5609.0)*.

	<i>July–May</i>			
	<i>Preliminary Actual</i>		<i>Estimates</i>	
	1998–99	1999–2000	1998–99	1999–2000
	\$m	\$m	\$m	\$m
Current receipts				
Stamp duties	3 947	3 747	3 588	4 150
Payroll tax	3 617	3 637	3 317	3 426
Land tax	958	859	835	814
Motor vehicle taxes	1 055	977	947	903
Gaming and betting	1 419	1 558	1 221	1 367
Commonwealth safety net taxes	1 975	1 989	1 801	1 837
Other taxes	1 251	1 245	1 112	1 131
Commonwealth general purpose grants	4 687	5 162	4 238	4 799
Commonwealth specific purpose grants	3 464	3 449	3 118	3 240
Dividends/tax equivalents	1 280	1 173	1 126	975
Other current receipts	1 316	1 256	1 104	1 227
<i>Total current receipts</i>	<i>24 969</i>	<i>25 052</i>	<i>22 407</i>	<i>23 869</i>
Current payments				
Interest payments	1 393	1 124	977	898
Superannuation	1 499	1 640	1 224	1 684
Subsidies to non-budget sector				
Redundancies	n.a.	86	68	41
Services	n.a.	840	927	713
Total	990	926	995	754
Departmental payments				
Redundancies	n.a.	98	52	79
Health	n.a.	5 949	4 835	5 584
Education	n.a.	5 440	4 313	5 030
Law and order(a)	n.a.	1 862	1 499	1 720
Community services	n.a.	1 253	1 056	1 195
Other	n.a.	6 105	4 634	5 472
Total	20 406	20 707	16 389	19 080
Treasurer's advances(b)	..	160
Less User charges	-2 092	-2 110	-1 700	-2 045
<i>Total current outlays</i>	<i>22 196</i>	<i>22 447</i>	<i>17 885</i>	<i>20 371</i>
Current result surplus/deficit (-)	2 773	2 605	2 599	3 498
Capital receipts—				
Commonwealth specific purpose grants	831	784	612	690
Other capital receipts	437	151	371	58
<i>Total capital receipts</i>	<i>1 268</i>	<i>935</i>	<i>983</i>	<i>748</i>
Capital outlays—				
Gross fixed capital payments	2 946	2 798	2 312	2 188
Capital grants	1 102	1 104	931	921
Less Asset sales	-597	-576	-431	-328
<i>Total capital outlays</i>	<i>3 451</i>	<i>3 326</i>	<i>2 812</i>	<i>2 781</i>
Capital result surplus/deficit (-)	-2 183	-2 391	-1 829	-2 033
Government Finance Statistics result surplus/deficit (-)	590	214	770	1 465

(a) Includes Attorney Generals Department, Department of Corrective Services and Police Services.

(b) Expenditure from the Treasurer's Advance is included in the relevant current payments figures.

Source: Financial Statement released by NSW Treasury. Figures may differ from data published in annual ABS publications.

23 ACTUAL PRIVATE NEW FIXED CAPITAL EXPENDITURE, CURRENT PRICES, NSW AND AUSTRALIA—TREND

Type of asset	Latest period	New South Wales			Australia		
		Latest figure	Change from prior period	Change from same period prior year	Latest figure	Change from prior period	Change from same period prior year
		\$m	%	%	\$m	%	%
New buildings and structures	Mar qtr 2000	1 000	4.4	-2.5	2 974	-2.5	-11.9
Equipment, plant and machinery	Mar qtr 2000	2 855	7.0	10.3	7 751	10.3	0.3
Total	Mar qtr 2000	3 855	6.3	6.6	10 725	2.0	-3.4

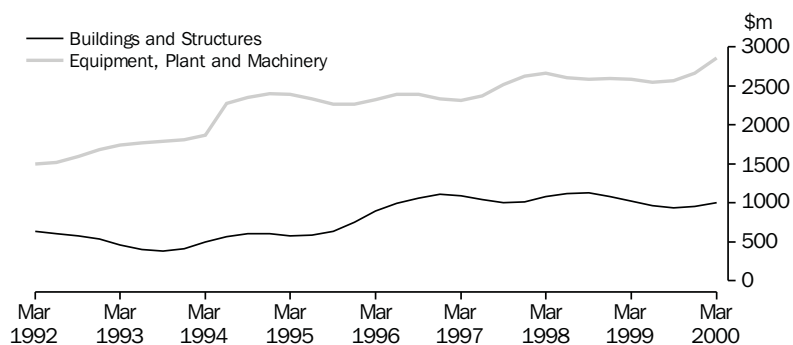
Source: State Estimates of Private New Capital Expenditure (Cat. no. 5646.0).

24 ACTUAL PRIVATE NEW FIXED CAPITAL EXPENDITURE, CURRENT PRICES, NSW—TREND

	Type of asset		Total
	New buildings and structures	Equipment, plant and machinery	
	\$m	\$m	\$m
1998			
December qtr	1 085	2 590	3 675
1999			
March qtr	1 026	2 589	3 615
June qtr	960	2 551	3 511
September qtr	938	2 570	3 508
December qtr	958	2 667	3 625
2000			
March qtr	1 000	2 858	3 855

Source: State Estimates of New Capital Expenditure (Cat. no. 5646.0).

25 ACTUAL PRIVATE NEW FIXED CAPITAL EXPENDITURE, CURRENT PRICES, NSW—TREND



Source: State Estimates of New Capital Expenditure (Cat. no. 5646.0).

26 INTERNATIONAL TRADE, IMPORTS(a) AND EXPORTS(b)—NSW AND AUSTRALIA

	Latest period	New South Wales			Australia		
		Latest figure	Change from prior period	Change from same period prior year	Latest figure	Change from prior period	Change from same period prior year
		\$m	%	%	\$m	%	%
Overseas imports into NSW	June 2000	4 908	6.5	36.6	10 493	1.4	28.9
Total overseas exports(c)	June 2000	1 745	-1.1	20.3	8 615	-0.8	32.6
Export commodities and SITC(d) code							
Meat and meat preparations (01)	June 2000	92	-1.5	20.2	417	-4.1	27.0
Cereals and cereal preparations (04)	June 2000	112	-4.8	-0.5	373	-13.6	-9.8
Wool and other animal hair (268)	June 2000	64	-6.1	40.5	271	4.2	62.5
Coal, coke and briquettes (32)	June 2000	267	-9.3	3.0	795	6.0	18.3
Iron and steel (67)	June 2000	94	-13.2	58.7	161	8.7	46.0
Aluminium (684)	June 2000	127	3.7	32.9	305	-13.7	11.9
Office machines and automatic data processing machines (75)	June 2000	29	-5.7	-8.2	46	-7.6	-22.8

(a) Figures shown are Customs value.

(b) Figures shown are Free On Board (FOB) values.

(c) Excludes re-exported goods.

(d) Standard International Trade Classification Revision 3.

Source: ABS unpublished data, International Trade database.

27 INTERNATIONAL TRADE, IMPORTS(A) AND EXPORTS(B)—NSW

	Overseas exports of SITC(c) commodities								
	Overseas imports into NSW	Total overseas exports(d)	Meat and meat preparations (01)	Cereals and cereal preparations (04)	Wool and other animal hair (268)	Coal, coke and briquettes (32)	Iron and steel (67)	Aluminium (684)	Office machines and automatic data processing machines (75)
	\$m	\$m	\$m	\$m	\$m	\$m	\$m	\$m	\$m
1998-99	42 142	r 17 948	948	1 231	685	3 766	958	1 151	r 333
1999-2000	47 969	18 934	1 046	1 255	824	3 092	830	1 339	379
1999									
April	3 386	r 1 289	74	110	41	234	56	79	r 28
May	3 603	r 1 508	75	79	57	283	103	93	r 39
June	3 594	r 1 451	76	110	46	260	59	95	r 31
July	3 497	r 1 514	83	105	54	298	45	104	r 33
August	3 806	r 1 537	85	106	50	278	48	96	r 35
September	4 098	r 1 573	81	94	69	249	59	107	r 29
October	3 765	r 1 553	91	103	78	239	53	105	r 29
November	4 272	1 580	90	107	93	244	67	104	r 34
December	3 977	r 1 577	94	112	83	211	68	112	r 28
2000									
January	3 462	r 1 331	68	68	55	261	50	101	r 22
February	3 737	r 1 516	86	114	72	226	r 61	122	r 32
March	r 4 347	r 1 637	95	123	78	238	79	132	r 43
April	r 3 492	r 1 610	87	94	r 59	r 285	98	r 108	r 35
May	r 4 610	r 1 764	r 93	r 118	r 64	295	108	r 122	r 30
June	4 908	1 745	92	112	64	267	94	127	29

(a) Figures shown are Customs value.

(b) Figures shown are Free On Board (FOB) values.

(c) Standard International Trade Classification Revision 3.

(d) Excludes re-exported goods.

Source: ABS unpublished data, International Trade database.

FOR MORE INFORMATION...

- INTERNET* **www.abs.gov.au** the ABS web site is the best place to start for access to summary data from our latest publications, information about the ABS, advice about upcoming releases, our catalogue, and Australia Now—a statistical profile.
- LIBRARY* A range of ABS publications is available from public and tertiary libraries Australia-wide. Contact your nearest library to determine whether it has the ABS statistics you require, or visit our web site for a list of libraries.
- CPI INFOLINE* For current and historical Consumer Price Index data, call 1902 981 074 (call cost 77c per minute).
- DIAL-A-STATISTIC* For the latest figures for National Accounts, Balance of Payments, Labour Force, Average Weekly Earnings, Estimated Resident Population and the Consumer Price Index call 1900 986 400 (call cost 77c per minute).

INFORMATION SERVICE

Data which have been published and can be provided within five minutes are free of charge. Our information consultants can also help you to access the full range of ABS information—ABS user-pays services can be tailored to your needs, time frame and budget. Publications may be purchased. Specialists are on hand to help you with analytical or methodological advice.

- PHONE* **1300 135 070**
- EMAIL* **client.services@abs.gov.au**
- FAX* 1300 135 211
- POST* Client Services, ABS, GPO Box 796, Sydney 1041

WHY NOT SUBSCRIBE?

ABS subscription services provide regular, convenient and prompt deliveries of ABS publications and products as they are released. Email delivery of monthly and quarterly publications is available.

- PHONE* 1300 366 323
- EMAIL* subscriptions@abs.gov.au
- FAX* 03 9615 7848
- POST* Subscription Services, ABS, GPO Box 2796Y, Melbourne 3001



2130710009005
ISSN 1031-8534

RRP \$17.50

© Commonwealth of Australia 2000